

Filbox Lines

Filter Boxes with filters MERV 8/10 included for fresh air intake to meet Ashrae 62.1 and 62.2. To be used with ACI or Maxx inline fans. Filter boxes built in plastic or metal with different filter class. Inlet/outlet sizes 100 to 400 mm.



MULTIFAMILY SOLUTIONS FOR AIR RENEWAL

ACCESSORIES



Back Draft Damper



AC Current Switch



Plastic Air Diffuser 4", 5" and 6"



Constant Air Flow Regulator



Speed Controller



Factory in Araquari-SC, Brazilian company with over 30 years, manufacturer of industrial and residential fans and exhaust fans.



Centrifugal Blowers Single or Double Inlet



Gabinet Plenum Fan Direct Drive



Centrifugal Exhaust Fan Kitchen Fans



Plenum Fan Single Intake



Centrifugal Blowers Single Inlet



SICFLUX - USA

201 S, BLVD, STE 1.200 - MIAMI, FL - USA 33131

+1 855 542 2590 / sicflux.com

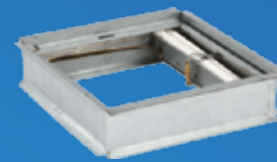
EXHAUST FAN | DUCTS | ACCESSORIES

BATH FAN



BF SES

Low noise exhaust fan
fan for continuous running.



Fire Damper RDF3



BF SP

Low noise exhaust fan
fan for continuous running.



Model	Duct (in.)	Air Delivery (CFM)		Sound Level (Sones)		Power Rating (V/Hz)
		0.1" Ps	0.25" Ps	0.1" Ps	0.25" Ps	
BF-SES 50	4 Oval	50	35	0.9	1.5	120/60
BF-SES 80	4 Oval	80	66	0.7	0.9	120/60
BF-SES 100	4 Oval	100	87	1.5	2.0	120/60
BF-SP 50	4	50	38	0.4	1.0	120/60
BF-SP 80	4	80	71	1.0	1.5	120/60
BF-SP 100	4	100	89	2.0	2.0	120/60

Low-profile housing for wall and smaller ceiling cavities.
It is HVI, ETL, and cETL certified.

INLINE FANS



Maxx Line

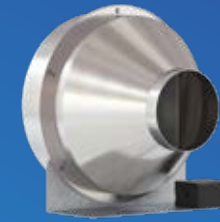
Inline fan for fresh air applications.
Size 100 to 200 mm (4 to 8 inches)
Airflow: 100 to 531 CFM
115 V



Model	Nom. RPM	Volts	Max. Watts	Speed	CFM x Static Pressure (SP) Ins. WG							Max. SP	Duct Diameter
					0"	0.125"	0.25"	0.375"	0.5"	0.75"	1.0"		
MAXX 100 MINI	2500	120	28	-	100	85	58	15	-	-	-	0.41	4"
MAXX 125 MINI	2450	120	30	-	126	112	46	-	-	-	-	0.38	5"
MAXX 100	1645	115	66	Low	70	61	55	50	45	35	21	1.14	4"
	2150	115	87	High	107	82	73	67	61	47	29	1.41	
MAXX 125	1645	115	66	Low	141	117	94	73	57	34	-	0.98	5"
	2150	115	87	High	192	164	147	128	108	50	32	1.22	
MAXX 150	1645	115	66	Low	238	200	141	82	58	26	-	0.82	6"
	2150	115	87	High	324	294	273	206	129	47	26	1.06	
MAXX 200	1645	115	66	Low	408	371	331	302	269	185	48	1.10	8"
	2150	115	87	High	531	502	474	443	417	345	204	1.37	

Performance is for installation ducted inlet, ducted outlet without accessories. RPM is nominal. There are no information about sound levels, because remote mounted fan noise levels it depends on the following variables: fan distance from the intake source, length and type of duct and other factors.

INLINE FANS



ACI Line

Supply or exhaust air aluminium body fan.
Size 100 to 355 mm (4 to 14 inches)
Airflow: 126 to 967 CFM
115 V



Model	Nom. RPM	Volts	Max. Watts	CFM x Static Pressure (SP) Ins. WG									Max. SP	Duct Diameter
				0"	0.125"	0.25"	0.375"	0.5"	0.75"	1.0"	1.25"	1.5"		
ACI 100 mini	2900	120	26.4	126	112	98	81	65	31	-	-	-	0.86	4"
ACI 100	2900	120	100	108	104	91	83	72	60	48	38	22	1.89	4"
ACI 125	2700	120	100	165	149	123	104	88	75	55	39	13	1.65	5"
ACI 150	2510	120	129	253	232	225	204	190	163	143	105	64	1.88	6"
ACI 200	2510	120	123	378	355	332	304	285	233	201	140	58	1.81	8"
ACI 250	2750	120	292	556	505	461	414	365	278	161	81	-	1.35	10"
ACI 315	2600	120	273	700	648	622	573	534	472	411	355	299	3.35	12"
ACI 355	2450	120	307	967	890	799	740	540	348	187	45	-	1.29	14"

Performance is for installation ducted inlet, ducted outlet without accessories. RPM is nominal. There are no information about sound levels, because remote mounted fan noise levels it depends on the following variables: fan distance from the intake source, length and type of duct and other factors.

PLASTIC GRILLES



White and Brown 4"



Louvered SCL4W

Fixed SCF4W



CAP - SCBW



SINGLE FAP

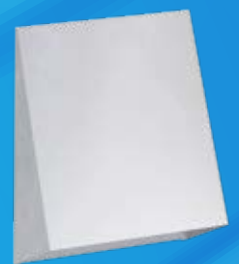
METALLIC GRILLES



Single Flap - SCMSU
4" / 5" / 6" / 7" / 8" / 10" / 12"
Bug Screen Option



Louver - SCMSUL
4" / 5" / 6" / 7" / 8" / 10" / 12"
Bug Screen Option



Hood - SCSMBS 100
4" / 5" / 6" / 7" / 8" / 10" / 12"
Bug Screen Option

Do you want more information about our product line?

Access sicflux.com