

Do You Need Exhaust Fans  
for Large Spaces?

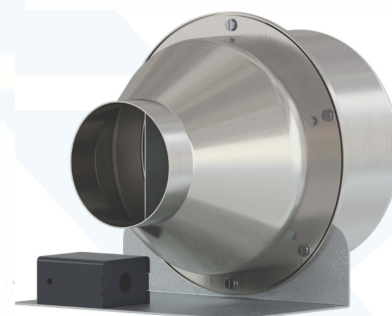
## Discover the ACI Line by Sicflux!

The **ACI Line (Axial Centrifugal Inline)** exhaust fans are designed for air extraction or intake in large spaces. They can be used for multiple outlets in the same area, various air inlets, or as line boosters in long duct systems.

Operating temperature: from **-40°C to +65°C**.

### Details of the ACI Exhaust Fan Line:

- Designed to operate along the ductwork;
- High pressure, high airflow, and low noise;
- Can be installed vertically or horizontally;
- Equipped with a junction box;
- Motor with ball bearings;
- Thermal protection;
- IP X4 / Class I;
- Features a radial fan with limit load impeller;
- Exclusive aluminum housing.



The **ACI Line** by **Sicflux** ensures the extraction of gases (non-flammable), smoke, and odors that may be present in the environment, reducing the risk of contamination and contributing to better indoor air quality.

This line offers **greater protection** and promotes the **health** of all occupants!

