

Titan SGSD

Clean air supply, general ventilation, and exhaust.



The SGSD cabinets are ventilation boxes with horizontal discharge. This product line can be used for clean air supply, general ventilation, and exhaust applications.

Its structure is made of galvanized steel sheet, with aluminum support columns, and it can be installed in both indoor and outdoor environments when used with protective accessories.

Units can be supplied with or without filters, offering four filtering options: G4, G4/M5, G4/F8, and G4/F9. Designed with a reduced height and dimensions that comply with the maximum face velocity of the air filter, ensuring proper removal of particulate matter and extending filter life.



Construction Features

Sirocco-type rotors with excellent performance;
Removable side panels for easy maintenance;
Built-in support bracket for simplified installation;
High-efficiency design that maintains proper air velocity across filters;
Optional integrated filters;
Housing made of steel sheet;
Weight ranging from 70 to 90 kg;
Three-phase motors.

Finishing Options

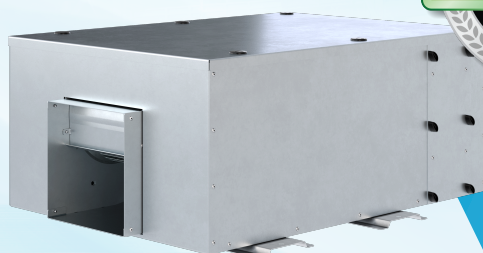
- Protective grille;
- Standard paint;
- UV-resistant outdoor paint;
- Cushion-type vibration isolators.

The SGSD line includes four standard models with pre-defined performance curves and can also be selected through Selectflux for a specific operating point.

Choose the finish that best suits your environment.

SGSD 167 - Compact

- * NA new model in the SGSD Ventilation Box line, model 167 features;
- * A compact box with only 325 mm in height;
- * Suitable for a wide range of ventilation and outdoor air intake needs;
- * Exclusive filter access system from the sides or top lid;
- * Easy installation and maintenance;
- * Available motor powers: 0.16 hp to 3.0 hp.



@sicflux.official f
www.sicflux.com.br